

NO.	BOONE CO.	FG-PGA	FT-FTA	REB	P	TP	A
C 35	Janie Bishop	3-5	0-0	5	4	6	0
F 13	Michele Bishop	1-6	2-6	8	1	4	0
F 14	Rhonda Rose	0-3	0-2	4	1	0	0
G 11	Kristy Gray	0-3	0-3	1	2	0	0
G 20	Doty Medico	2-3	4-6	1	1	8	1
23	Kathy Frye	0-0	0-0	1	0	0	0
50	Debbie Moevas	-	DNP				
44	Lori O'Hara	-	DNP				
25	Debbie O'Hara	-	DNP				
24	Lisa Neal	-	DNP				
10	Shelley Combs	0-0	0-0	0	0	0	0
32	Lisa Chambers	-	DNP				
		-	-				
		-	-	2	P.B.		
TOTALS		6-20	6-17	28	9	18	1

NO.	CLAY CO.	FG-PGA	FT-FTA	REB	P	TP	A
F 12	Billie Cornett	0-0	1-2	6	3	1	0
C 34	Pauletta Lipps	3-5	0-0	6	1	6	0
G 20	Regina Gregory	0-6	2-3	0	3	2	0
F 32	Regina Hubbard	1-5	0-2	3	3	2	1
G 44	Virgella Combs	0-3	0-0	8	2	0	1
10	Liz Foister	0-3	1-2	2	0	1	0
12	Rhonda Hyde	0-0	2-2	0	3	2	1
40	Illie Bowman	-	-				
30	Carson Webb	-	-				
50	Lalita Hobbs	-	-				
14	Patty Lawson	0-0	0-0	0	0	0	0
24	Diane Baker	-	-				
		-	-				
		-	-	2	P.B.		
TOTALS		4-22	6-11	27	15	14	3

PERCENTS      30.0      35.3      0      TEAM REBOUNDS (NOT IN TOTAL)

PERCENTS      18.2      54.5      0      TEAM REBOUNDS (NOT IN TOTAL)

$\frac{BOONE CO.}{11-7} = 18$

$\frac{CLAY CO.}{7-7} = 14$

SCORE BY HALVES: OFFICIALS: Dottie Brothers + HADE Durbin

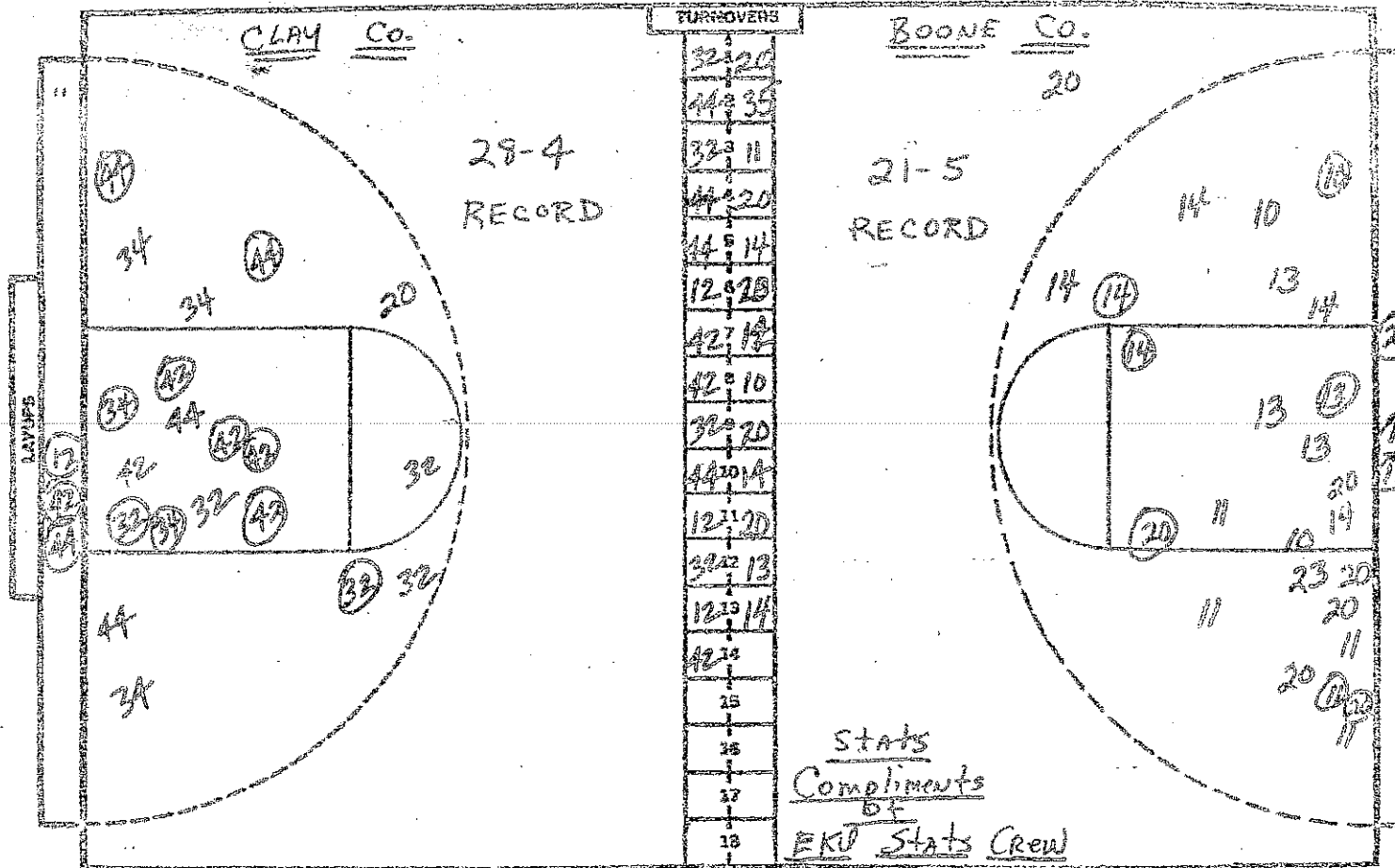
CASE CHART

Clay County

Boone County

DATE March 25, 1983

F17



TURNOVERS

32	20
44	35
32	11
44	20
44	14
12	28
42	12
42	10
32	20
44	14
12	20
22	13
12	14
42	14
15	
16	
17	
18	

No.	CLAY Co.	FG-FGA	FT-FTA	RB	P	TP	A
F 12	Billie Cornett	5-6	2-7	11	3	12	1
C 34	Fauletts Lipps	5-9	0-0	8	3	10	0
G 20	Regina Gregory	0-7	4-5	0	5	4	0
F 32	Regina Hubbard	3-11	2-4	6	5	8	3
G 44	Virgella Combs	3-8	0-0	13	3	6	2
10	Liz Foister	0-3	1-2	2	0	1	0
12	Rhonda Hyde	1-1	6-7	1	4	8	4
40	Lillie Bowman	-	DNP				
30	Carmen Webb	-	DNP				
50	Lolita Hobbs	-	DNP				
14	Patty Lawson	0-0	0-0	0	0	0	0
24	Diana Baker	-	DNP				
		-	-				
		-	-	3	D.B.		
TOTALS		17-45	15-25	44	23	49	10

PERCENTS 37.8 60.0 3 TEAM REBOUNDS (NOT IN TOTALS)

No.	BOONE Co.	FG-FGA	FT-FTA	RB	P	TP	A
C 35	Janie Bishop	4-6	0-0	5	5	8	0
F 13	Michelle Bishop	3-11	3-8	12	2	9	1
F 14	Rhonda Rose	2-8	0-2	7	3	4	1
C 11	Kristy Gray	2-10	0-4	1	4	4	3
G 20	Dody Medico	4-10	8-10	2	5	16	2
23	Kathy Frye	1-2	0-0	2	0	2	0
50	Debbie Moeves	-	DNP				
44	Lori O'Hara	-	DNP				
25	Debbie O'Hara	0-0	0-0	0	0	0	0
24	Lisa Neal	-	DNP				
10	Shelley Combs	1-3	0-0	2	2	2	0
32	Lisa Chambers	-	DNP				
		-	-				
		-	-	2	D.B.		
TOTALS		17-50	11-24	33	21	45	7

PERCENTS 34.0 45.8 4 TEAM REBOUNDS (NOT IN TOTALS)

SCORE BY HALVES: CLAY Co. 7-7 13-22 = 49 Boone Co. 11-7 10-17 = 45  
 OFFICIALS Dottie Brothers & HADE DURBIN